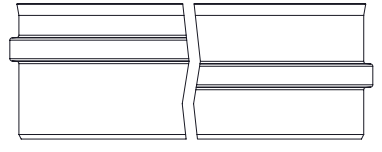
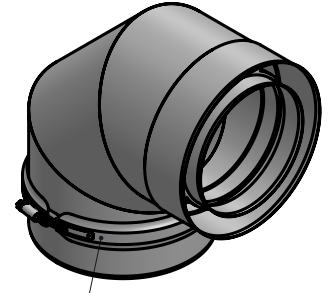


Possible type of female part "FU"




1:8 (150/200)



incl. System Clamp

Ø	100/150	130/200	150/200
A	100	130	150
B	150	200	200
C	167		192
D	109		119
E	87		103
kg	0,98	1,45	1,54

notes: ENCD	DIN ISO 13920 Tolerances B			 Jeremias [®] CHIMNEY SYSTEMS	scale	
	revisions-no.		mm / kg		1:8	
	A1				format	
		date	name		A4	
	description	drawn by	02.01.20		MSA	sheet
	Elbow 90°	checked by	02.01.20		SWA	1 of 1
code	approved by	02.01.20	JWY			
H-TWIN 60 Ø	modified by					
drawing-no.						
01-03-03-6250-000						

© Jeremias GmbH. All rights reserved, also regarding any disposal, exploitation, editing, distribution, as well as in the event of applications for industrial property rights.