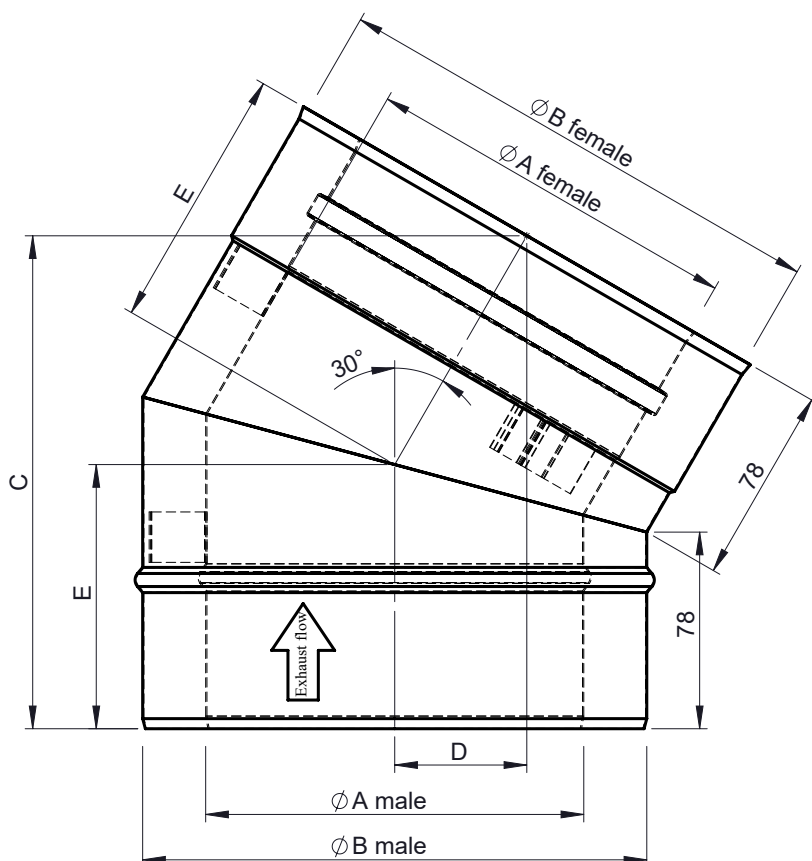
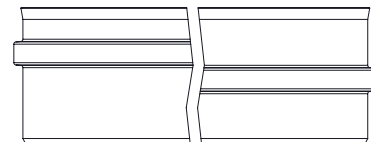
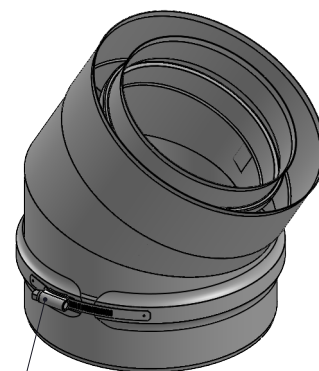


Possible type of female part "FU"



1:6 (150/200)



Incl. system Clamp

	Ø	100/150	130/200	150/200
A		100	130	150
B		150	200	200
C		183		195
D		49		52
E		98		105
kg		0,67	0,92	0,97

notes:

ENCD

DIN ISO 13920 Tolerances B

revisions-no.

A

mm / kg

Jeremias[®]
CHIMNEY SYSTEMS

scale

1:6

format

A4

sheet

1 of 1



description Elbow 30°

code H-TWIN 17 Ø

drawing-no.

01-03-03-6050-000