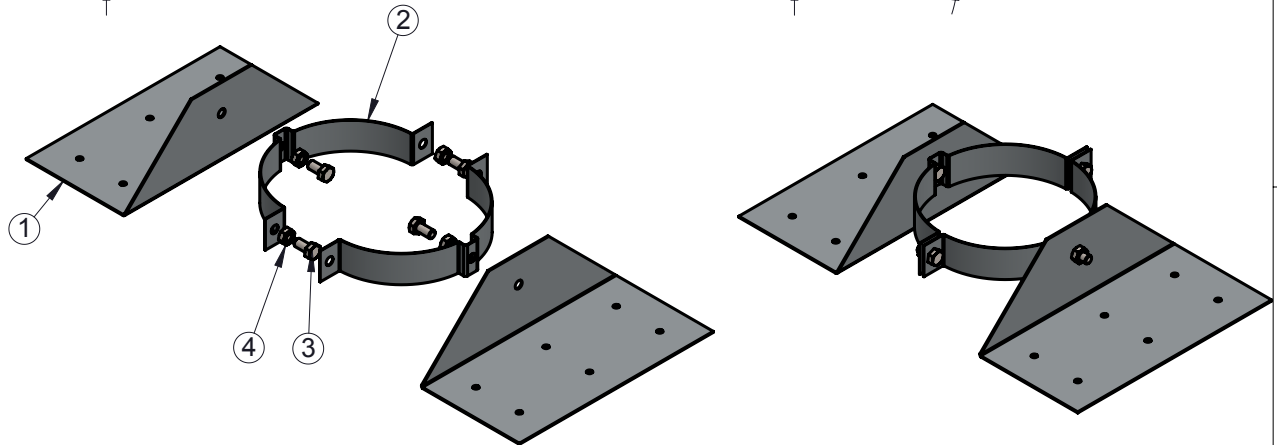
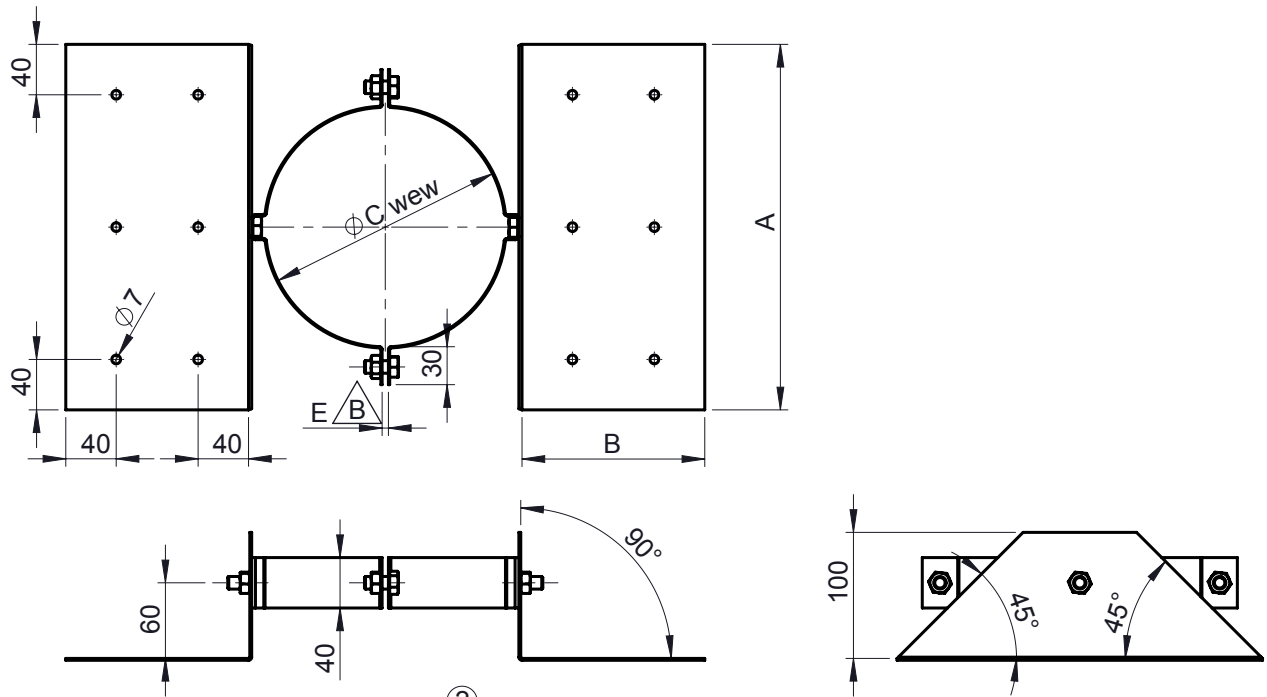


TABLE OF CORRECTIONS (LAST FIVE)

| REVISION | CORRECTION | WZT NO | DESCRIPTION | DATE | NAME |
|----------|------------|----------|---|----------|------|
| 01 | A | 182/2015 | obejma - zmiana materiału z 1.4301 IIIC na 1.4301 IIID | 17.08.17 | MFL |
| 02 | B | 62/2017 | skrócenie rozwinięcia obejmy dla DN100, po 5mm na każdej z obejm, zmiana długości śruby dla DN100 - dopasowanie elementu dla systemu H-Twin | 14.07.17 | PSA |



| 4 | Nakrętka sześciokątna (DIN 934) | A2 | M10 | 4 |
|----|---|---------------------------|-----------------------|-----|
| 3 | Śruba o łbie sześciokątnym rodzaj C (DIN 933) | A2 | M10 X D $\triangle B$ | 4 |
| 2 | obejma | 1.4301 IIID | t1 | 2 |
| 1 | uchwyt | 1.4301 IIIC $\triangle A$ | 1,5 | 2 |
| NO | NAME / GEO / DIN / NAV | MATERIAL | THICKNESS | QTY |

| $\triangle B$ | | | | | | | | | | | | | | | | |
|---------------|--------|-----|-----|-----|-----|-----|-----|-----|-----|-----|-----|-----|-----|-----|-----|-----|
| | ϕ | 080 | 100 | 115 | 120 | 130 | 140 | 150 | 160 | 180 | 200 | 225 | 250 | 300 | 350 | 400 |
| A | 230 | 250 | 260 | 260 | 280 | 290 | 300 | 310 | 330 | 350 | 375 | 400 | 450 | 500 | 550 | |
| B | 115 | 125 | 130 | 130 | 140 | 145 | 150 | 155 | 165 | 175 | 188 | 200 | 225 | 250 | 275 | |
| C | 130 | 150 | 165 | 170 | 180 | 190 | 200 | 210 | 230 | 250 | 275 | 300 | 350 | 400 | 450 | |
| D | 20 | 30 | 20 | | | | | | | | | | | | | |
| E | 5 | 10 | 5 | | | | | | | | | | | | | |

| | | | | | | | | | | | | |
|--|-------------------------|-------------|------------|-----------------|----------------------|-----|--|--|----|----------|------|--|
| t1 | 1,0 | | | | | 1,5 | | | | | | |
| <p>All dimensions without tolerances are produced according to Jeremias internal tolerances</p> <p>All rights reserved</p> | Material inside/outside | | / | | Description | | | | | Weight | | |
| | | | Date | Name | Wspornik krokwiowy | | | | | Format | | |
| | drawn by | 2015-06-27 | MFL | Code | | | | | A4 | | | |
| | checked by | 2015-06-27 | PSA | Production code | | | | | | | | |
| | checked by | | | Project | | | | | | | | |
| | | checked by | | | Drawing no. | | | | | Revision | Type | |
| | | approved by | 2015-06-27 | JWY | 215 - 1313 - 02 - 2P | | | | | 1 of 2 | | |

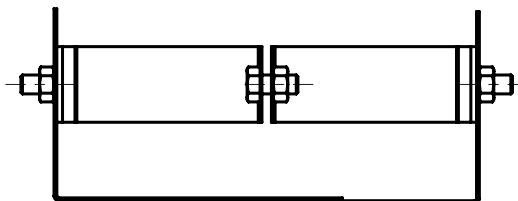
1

2

3

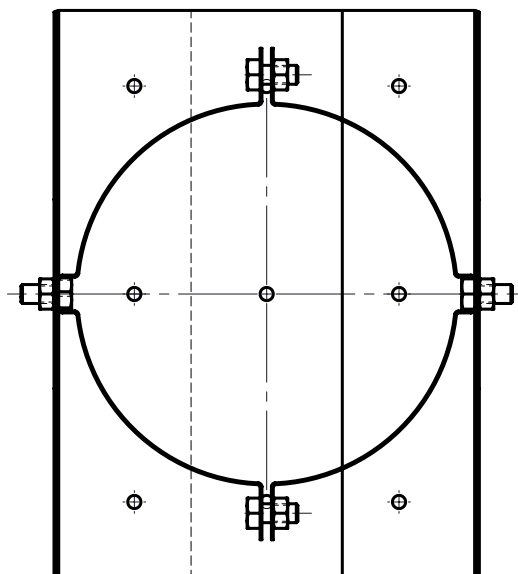
4

A



A

B



B

C

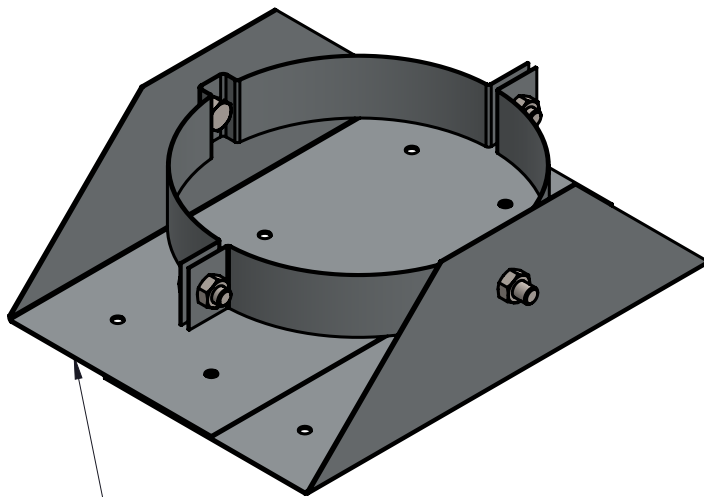
C

D

D

E

E



UWAGA !!!
Element pakować w następujący sposób

Jeremias[®]
 CHIMNEY SYSTEMS

All dimensions without tolerances are produced according to Jeremias internal tolerances

All rights reserved

Material
 inside/outside

/

| | Date | Name |
|-------------|------------|------|
| drawn by | 2015-06-27 | MFL |
| checked by | 2015-06-27 | PSA |
| checked by | | |
| checked by | | |
| approved by | 2015-06-27 | JWY |

Description

Wspornik krokwiowy

Code

Production code

Project

Drawing no.

Revision

Type

215 - 1313 - 02 - 2P



Weight

Format

A4

Sheet

2 of 2

1

2

3

4

F

F