

A

B

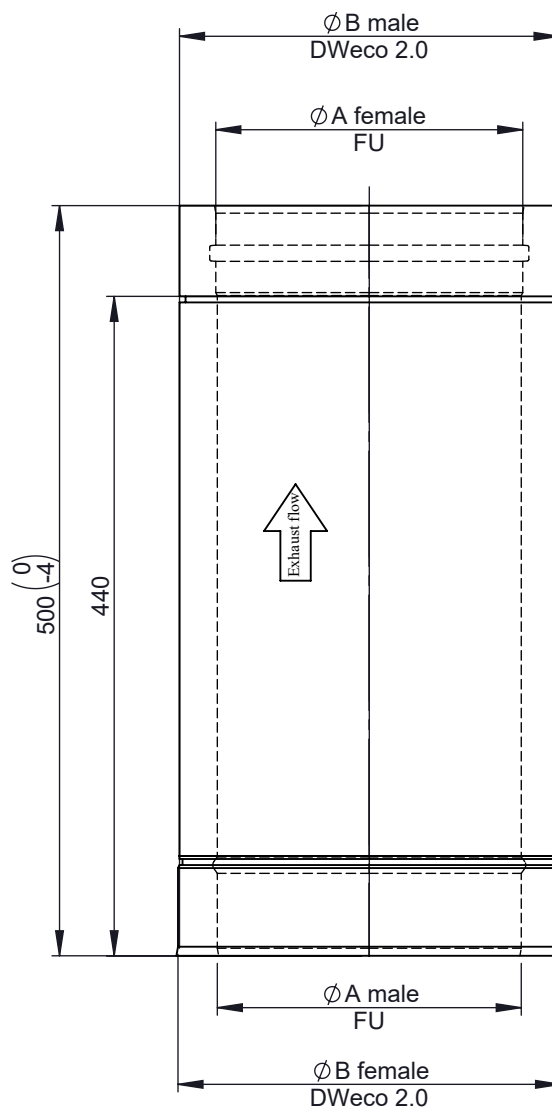
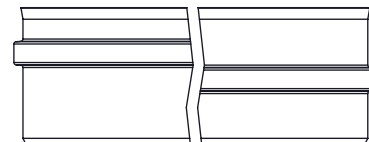
C

D

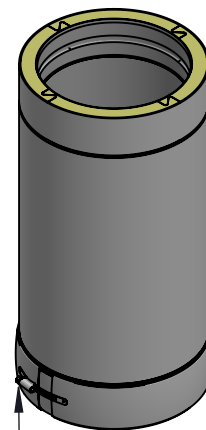
E

F

Possible type of female part "FU"



1:10 (150)



incl. system clamp

\varnothing	080	100	115	120	130	150	160	180	200	250	300	350	400	450	500	600
A	80	100	115	120	130	150	160	180	200	250	300	350	400	450	500	600
B	130	150	165	170	180	200	210	230	250	300	350	400	450	500	550	650
kg	2	2,5	2,7	2,8	3,1	3,5	3,6	4,0	4,4	5,4	6,4	7,4	8,4	9,3	10,3	12,3

notes:

ENCD

DIN ISO 13920 Tolerances B

revisions-no.

A

mm / kg

date

name

drawn by

25.10.19

JMA

checked by

25.10.19

SWA

approved by

25.10.19

JWY

modified by

Jeremias[®]
 CHIMNEY SYSTEMS

description Straight pipe element 500 mm

code **215-DWECO 14**drawing-no. **02-35-430-205**

scale

1:5

format

A4

sheet

1 of 1

