

A

B

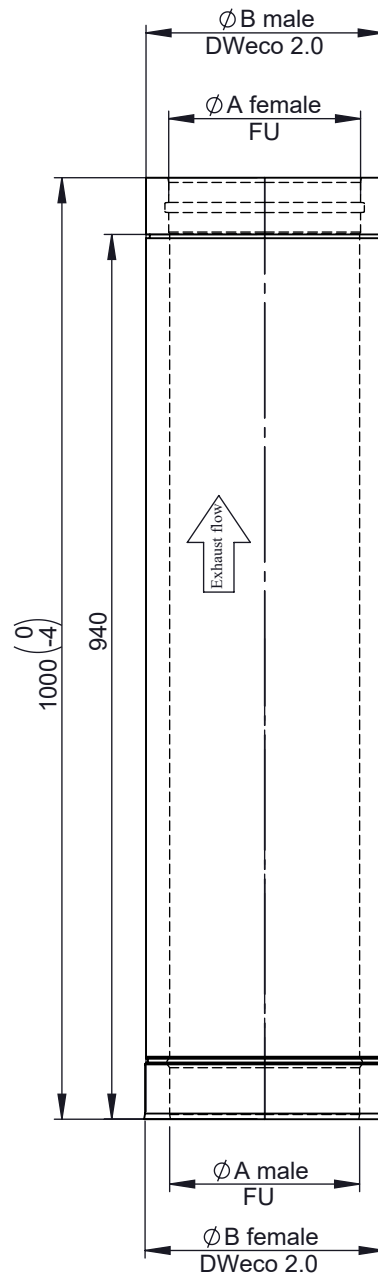
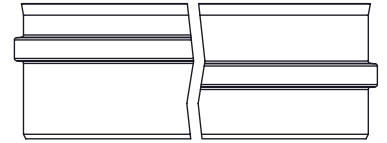
C

D

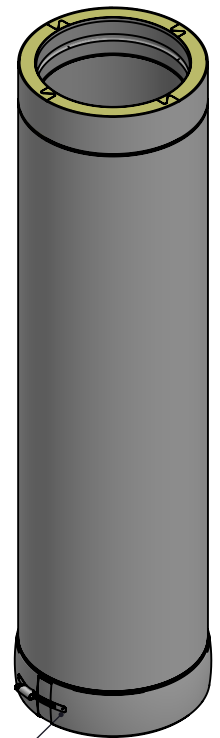
E

F

Possible type of female part "FU"



1:10 (0150)



incl. system clamp

\varnothing	080	100	115	120	130	140	150	160	180	200	250	300	350	400	450	500	600
A	80	100	115	120	130	140	150	160	180	200	250	300	350	400	450	500	600
B	130	150	165	170	180	190	200	210	230	250	300	350	400	450	500	550	650
kg	3,4	4	4,6	4,8	5	5,4	6,9	7,3	8,1	8,9	10,8	12,8	14,8	16,7	18,7	20,7	24,6

notes:

ENCD

DIN ISO 13920 Tolerances B

revisions-no.

A

mm / kg

date

name

drawn by

25.10.19

JMA

checked by

25.10.19

SWA

approved by

25.10.19

JWY

modified by

Jeremias[®]
CHIMNEY SYSTEMS

description

Straight pipe element 1000 mm

code

215-DWECO 13

drawing-no.

02-35-4400-205

scale

1:10

format

A4

sheet

1 of 1

